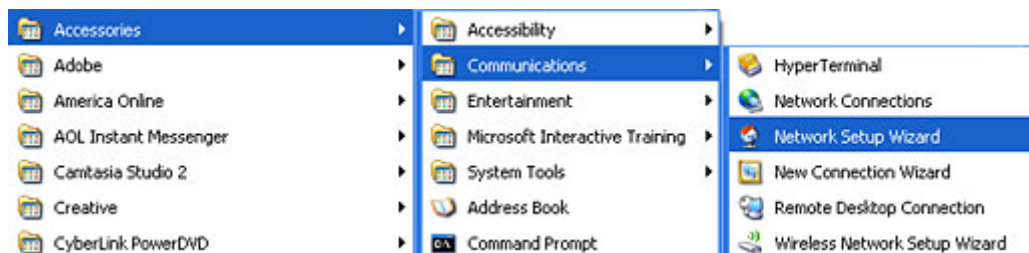


Setting Up Your Home Network in Windows

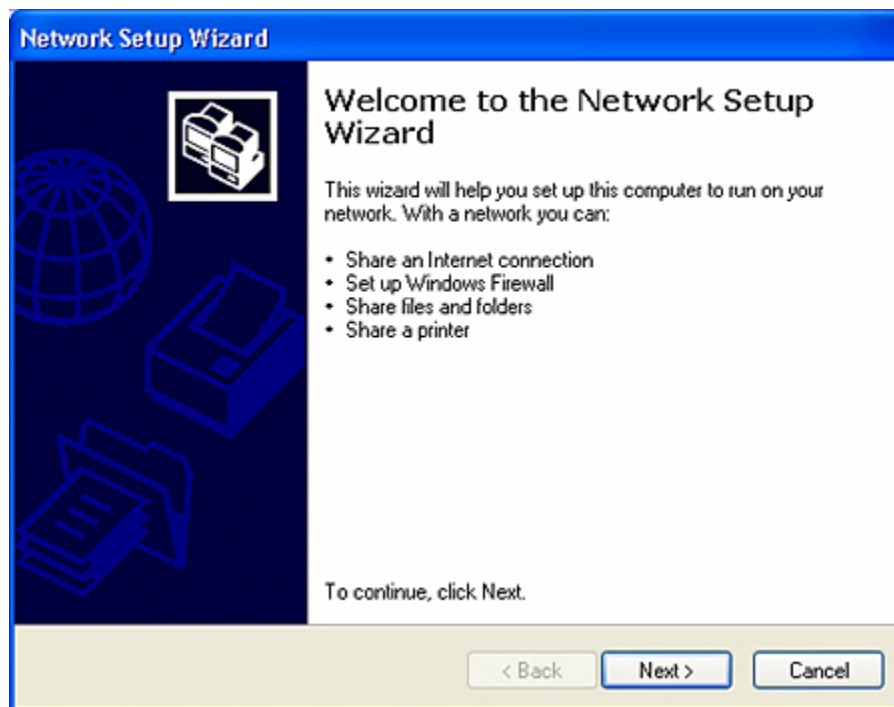
Although you can set up a home network in Windows 98 SE, Me and 2000, you will find it significantly easier if the computer connected to the router is running Windows XP. Windows XP was designed with features and installation wizards specifically for home networking.

Note: The instructions for installing a home network in the earlier versions of Windows will be released in the future. Until these instructions are released, you can find information on the [Microsoft Web site](#).

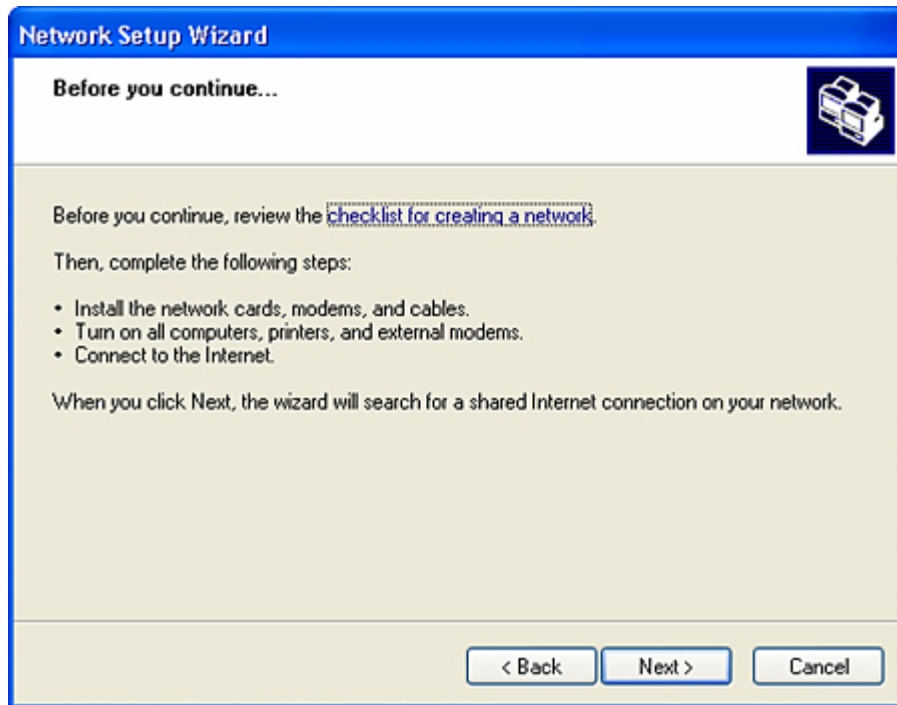
1. Click **Start** in the left task bar.
2. Click **All Programs**.
3. Click **Accessories**.



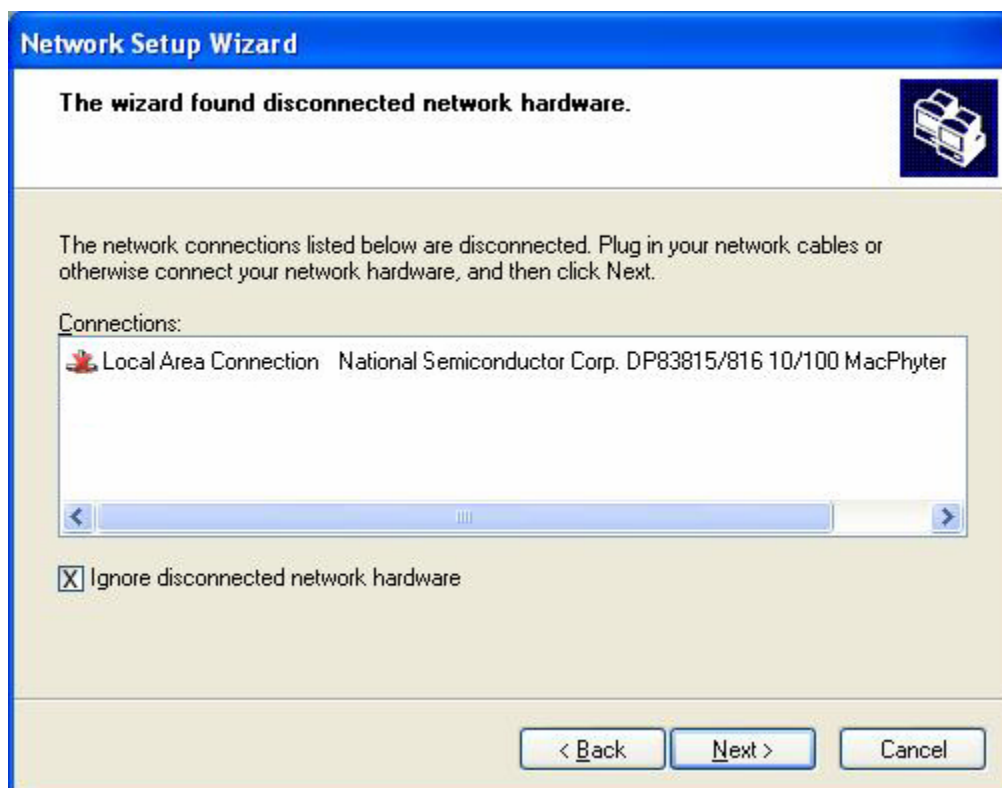
4. Click **Communications**.
5. Select **Network Setup Wizard**.
6. Select **Next** when the Welcome to the Network Setup Wizard displays.



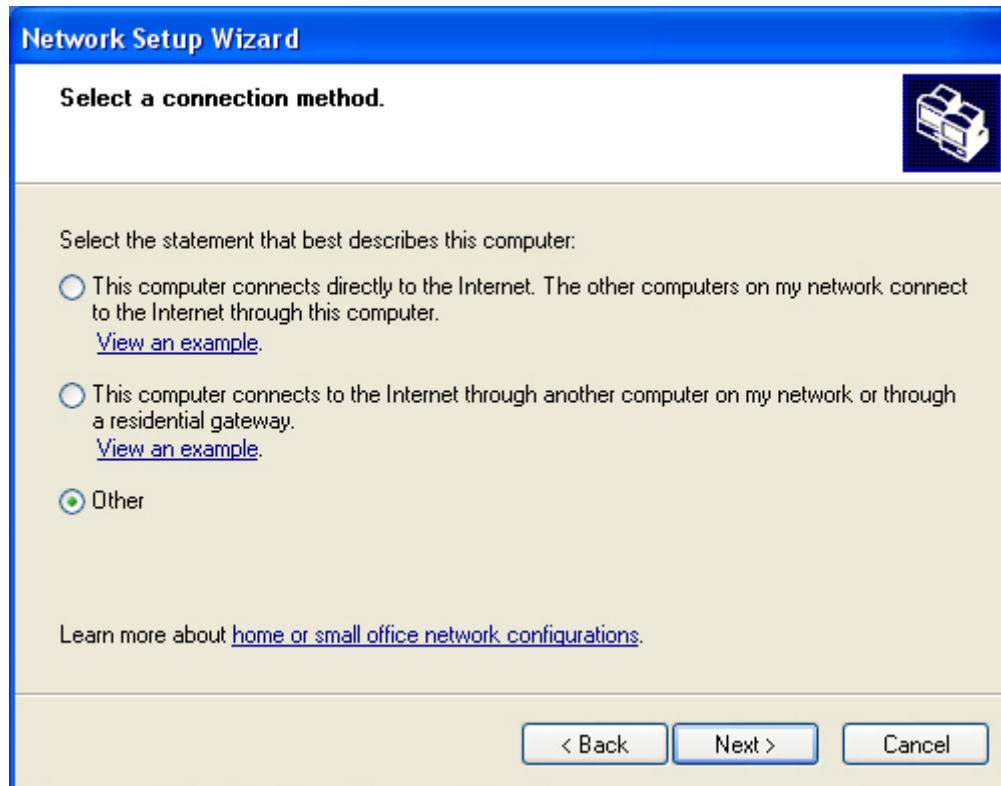
7. Review the preparation steps and select **Next**. Please disregard the note to install the network adapters and turn on all peripherals. That will be done in a later step.



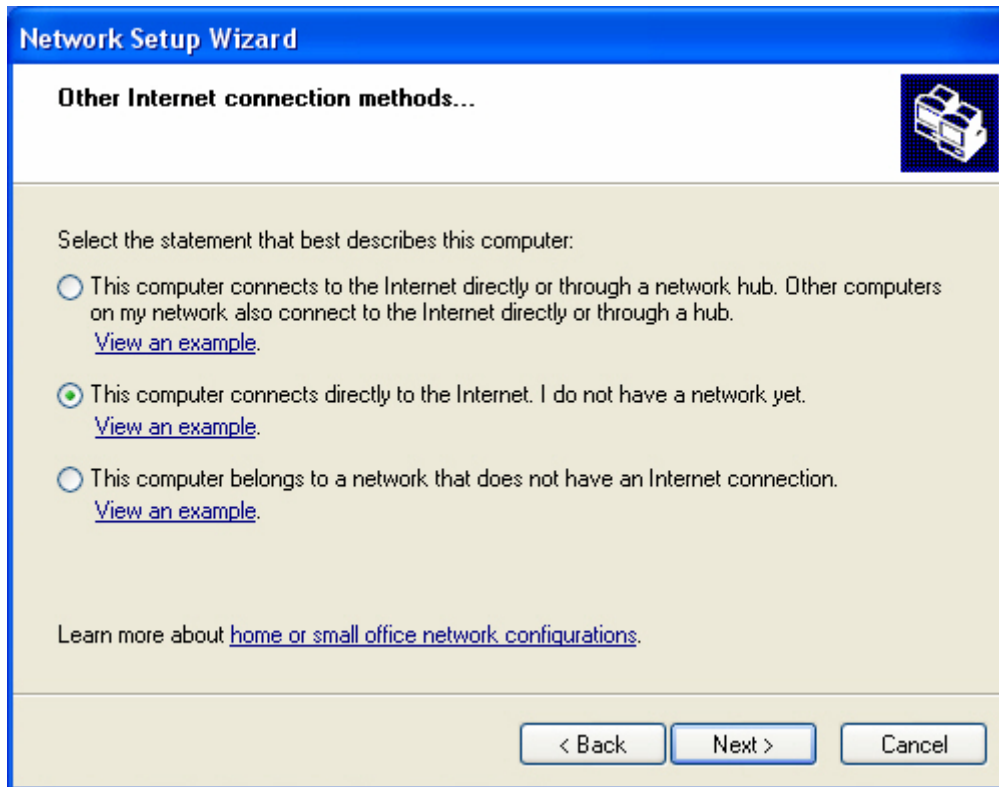
8. If the disconnected network hardware window displays, select Ignore disconnected network hardware and click **Next**.



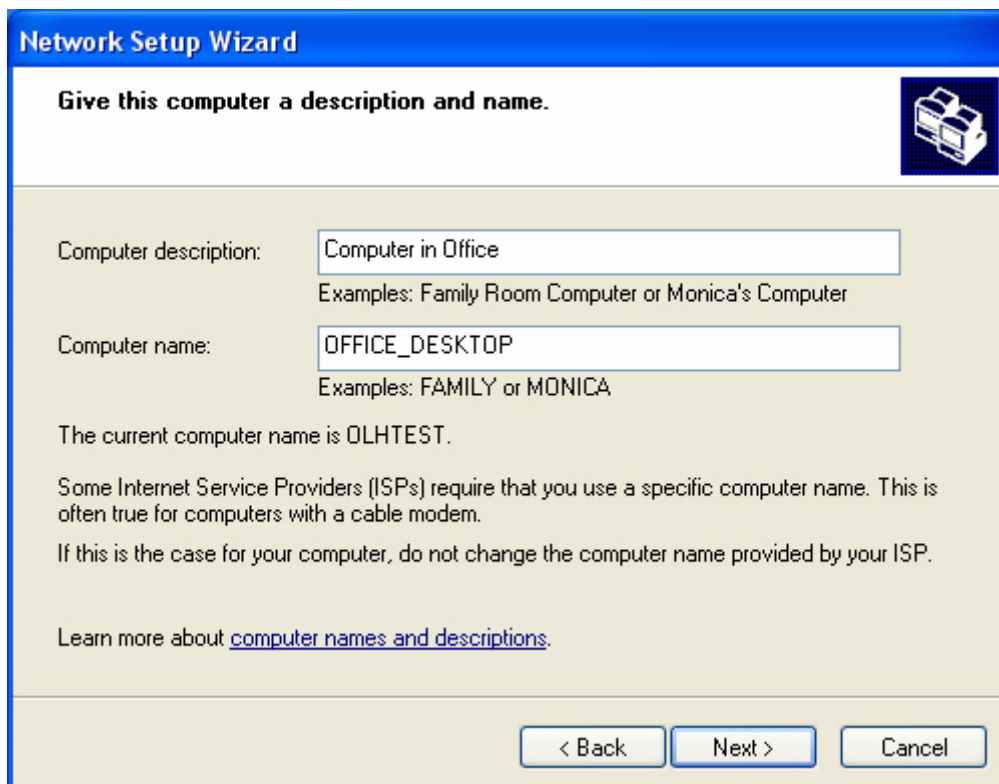
9. Select **Other** as the Internet connection method and click **Next**.



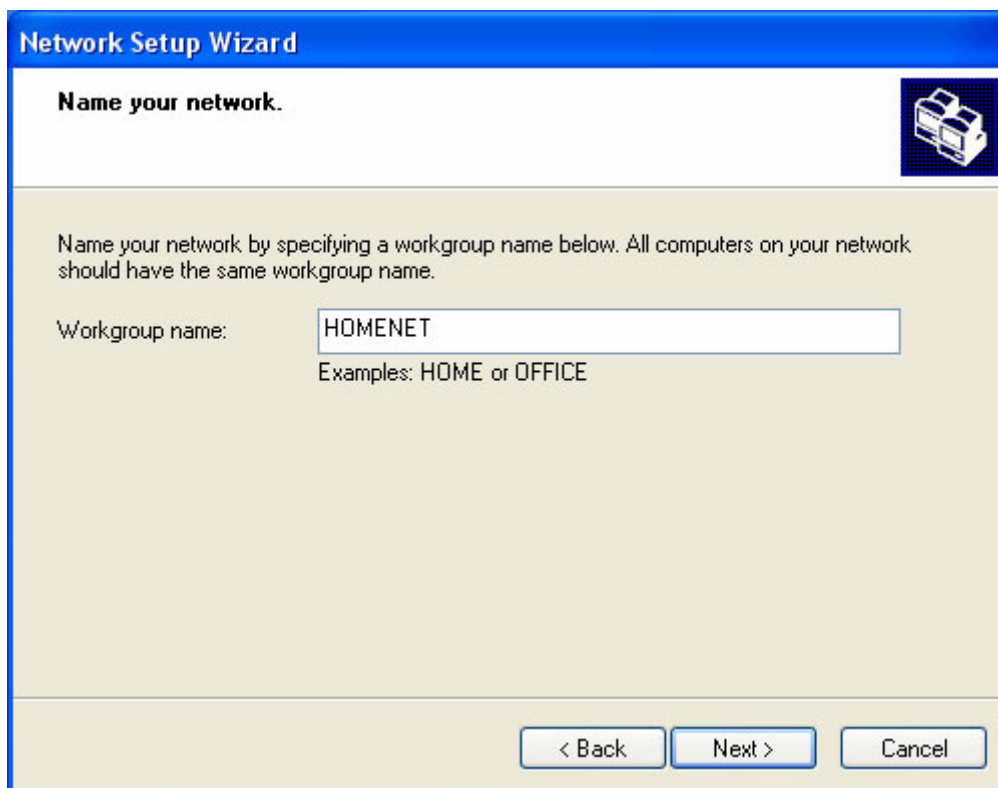
10. Select **This computer connects directly to the Internet. I do not have a network yet** as the specific Internet connection method and click **Next**.



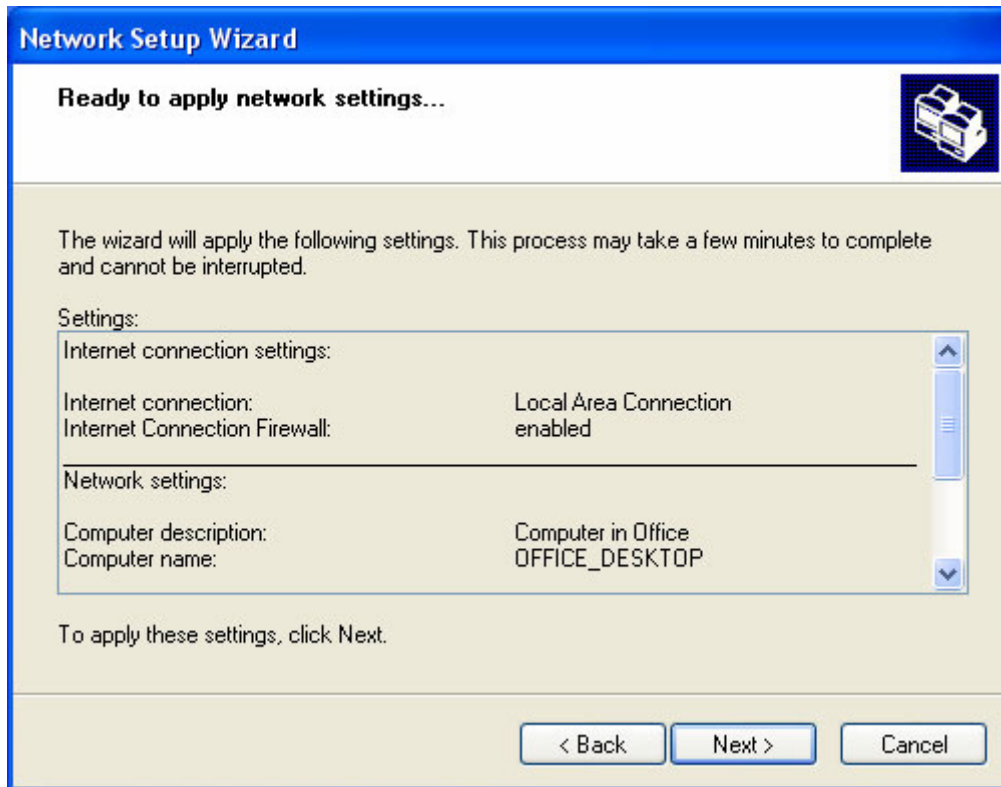
11. Enter a description in the **Computer description** field for the computer you are connecting to the network. It should be a description that differentiates it from the other computers that will be on the network (For example, office desktop).



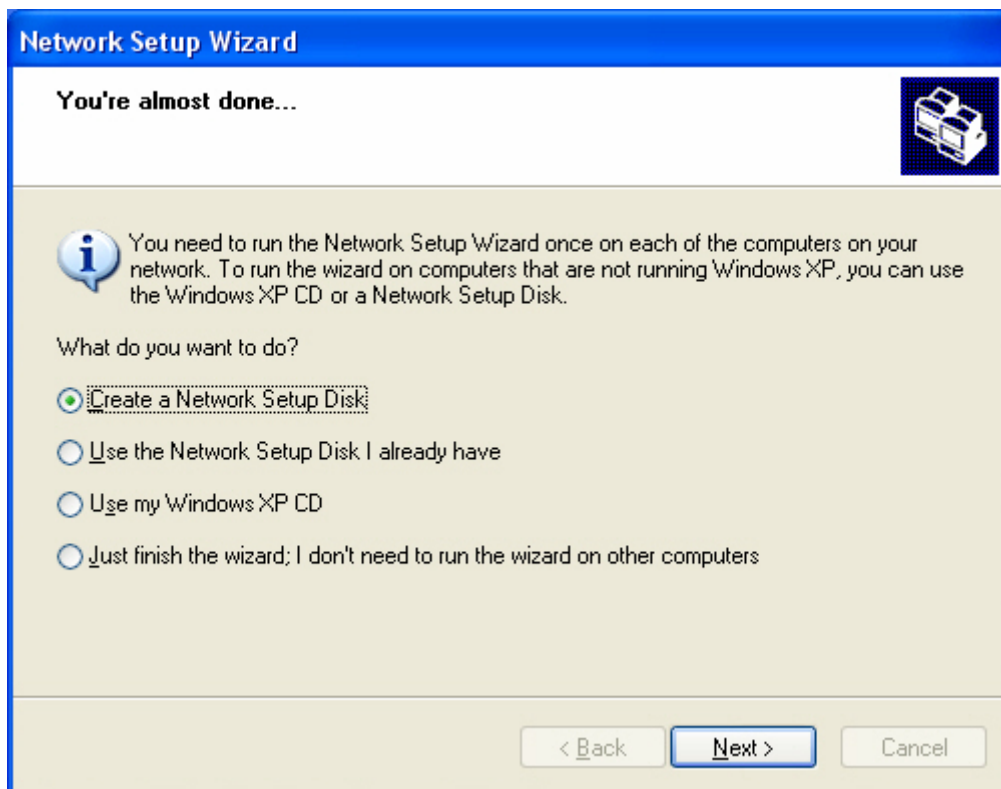
12. Enter a name for this computer in the **Computer name** field. The name cannot contain any spaces or special characters.
13. Enter a name for your home network in the **Workgroup name** field and click **Next**.
 - **Note:** In order to connect other computers to this network, all the computers must be in the same workgroup.



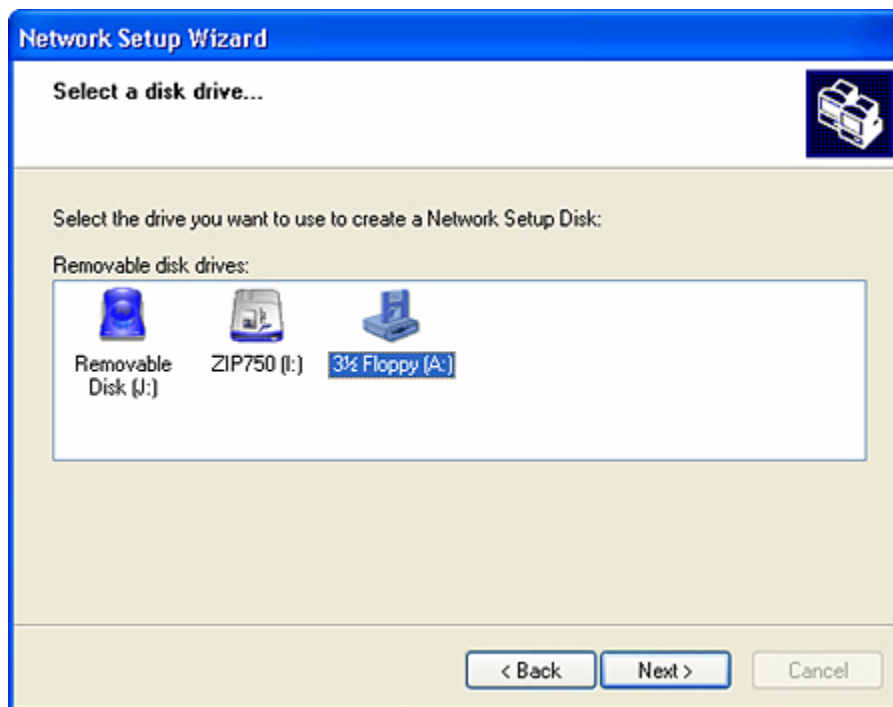
14. Verify the network settings you have entered and click **Next**.



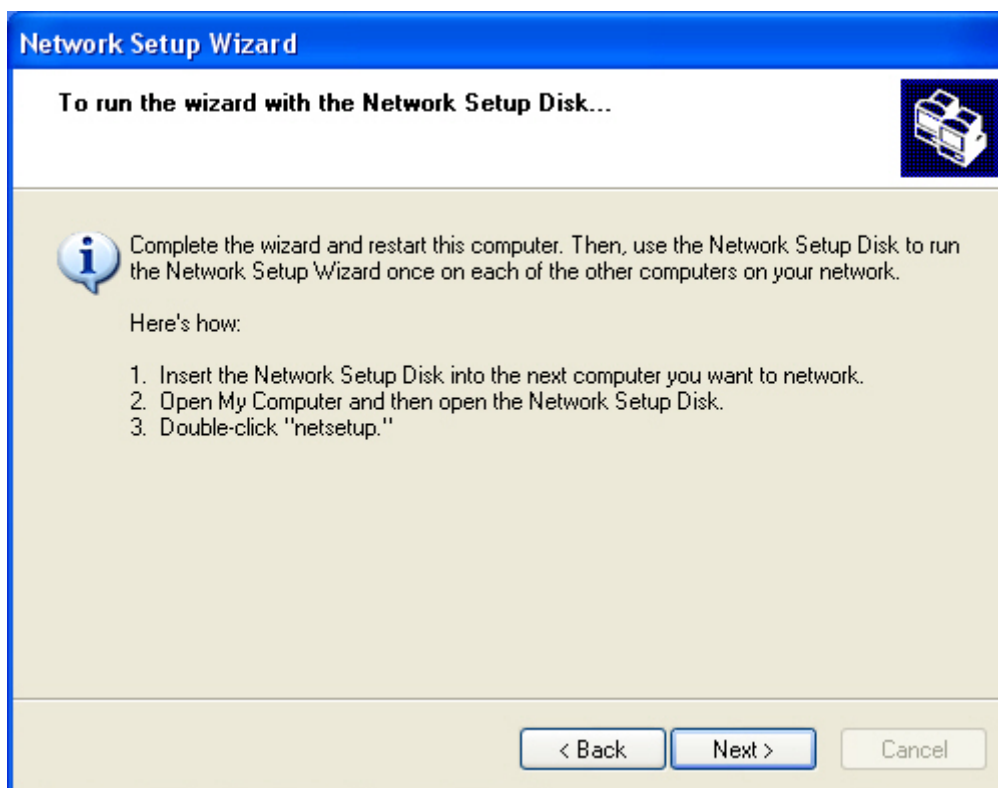
15. Select **Create a Network Setup Disk** and click **Next**.



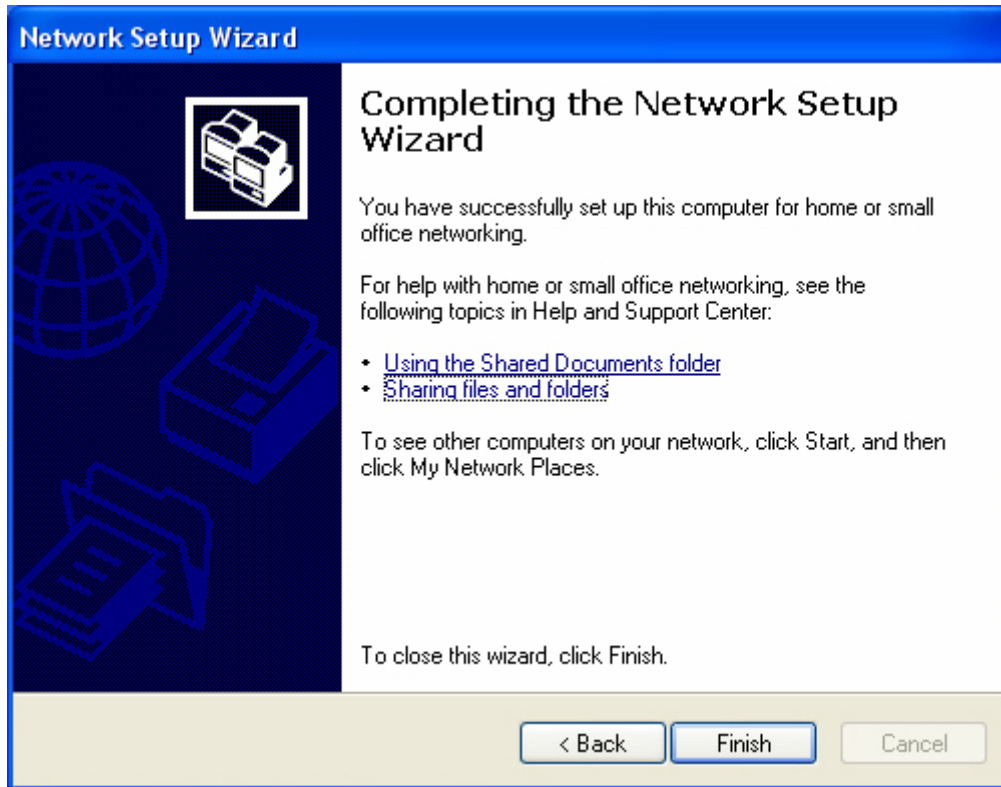
16. Select the drive where you want to save the information from the options displayed and click **Next**.



17. Follow the directions for the type of drive you selected and click **Next**.
18. Review the instructions for using this disk.



19. Remove the disk from the drive and click **Next**.
20. Click **Finish**. You will use this setup disk later if you add the other computers to your network.



21. If you are prompted to restart your computer, click **Yes**.

